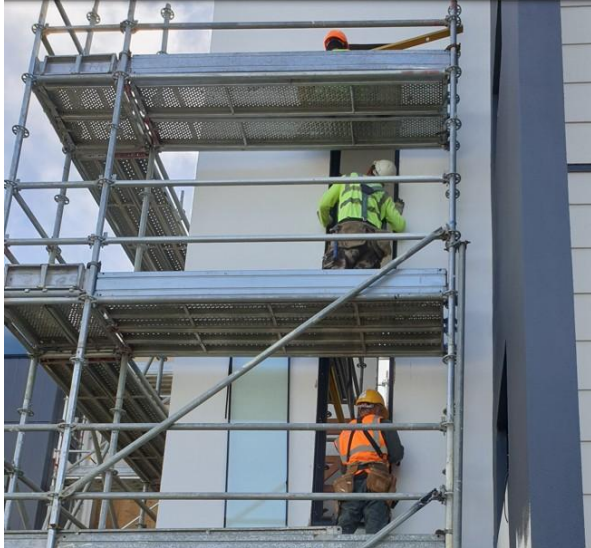


RECEIVERS – providing assurance



In the construction sector projects often hit financial problems, with insolvency following. This generates risk from a H&S perspective with financial pressures encouraging project owners to cut corners.

Based on our work with developers taking over a failed Kiwi Build site, Winsland was asked to support the receiver by **providing assurance** on three large developments.

With working on partially completed sites and workforces comprised almost entirely of temporary offshore workers, these were not straightforward builds.

As PCBU assuming responsibility for these sites, the receivers were seeking assurance that health and safety was being well managed as part of their discharge due diligence obligations.

These were difficult sites for a multitude of reasons thus it required a pragmatic approach and a strong **focus on the critical risks**. The buildings had been left partially completed, few in the workforce spoke English or had learned their trade under NZ regulations, thus there was an elevated level of risk and complexity. Over several months, whilst the building work was completed, Winsland provided health and safety expertise to the receivers including;

- **Monthly site audits** to both identify and recommend solutions to issues.
- **Expert liaison** with contractors on issues with non-compliant fall protection.
- **Advice to contractors on compliance** with NZ health and safety requirements.

All projects were completed without a serious health and safety event resulting in serious harm. The receivers were able to discharge their duties with assurance that health and safety was being effectively monitored and critical risks were being managed.