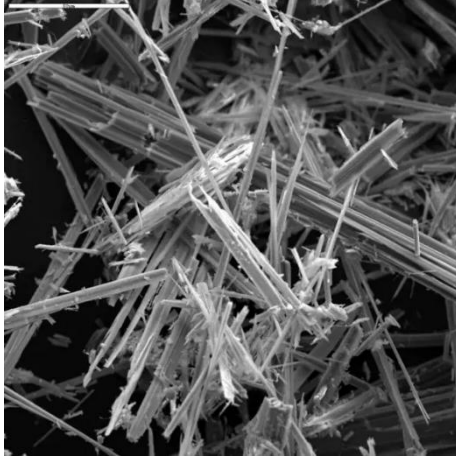


CHEP - Asbestos



CHEP maintain and distribute pallets and plastic bins across NZ. Their Penrose site had asbestos in soils across the facility and management of asbestos risks mean the roadway and storage areas of site had to be stripped and replaced with hundreds of cubic metres of fill and the roadway for heavy trucks (approximately 100 per day) replaced. This had to happen over several weeks whilst keeping BAU happening in the plant, staff safe and trucks moving in and out of site without normal roadways available.

CHEP needed **assurance** that **asbestos risk** to its people and customers was managed during this work. Being well qualified through its work with the Reserve Bank of NZ and BRANZ (the recognised authority on dealing with asbestos risk), Winsland;

- Reviewed the landlord's site **Asbestos Management plan**
- Reviewed **test results** confirmed **asbestos management strategies** and determined future testing requirements.
- Approved the contractor's asbestos management plan for undertaking the work.
- Developed a CHEP site specific **Asbestos Management Plan (AMP)** for ongoing safe management of the site.
- Created **plain language guidance for contractors** to remove ongoing confusion on the requirements for future work with asbestos. The focus was to ensure treatment was effective yet appropriate to the risk.
- Provided regular monitoring of the works as they progressed, liaising with contractors and ensuring **procedures were audited and adhered to.**

This work provided assurance to CHEP and its workers that those on site were not exposed to asbestos related risk, and regulatory compliance was maintained consistent with the requirements of the Health and Safety at Work Asbestos Regulations 2016. It provided a clear set of procedures for future work which would enable plant management to make future decisions relating to asbestos without the need to engage expensive consultants or use unnecessary and expensive controls that were not required.